

CRS Series 15K Pressure Couplings



Introduction

The CRS series coupler is a high pressure water blaster coupler. It's thread to connect so much safer than the common latch type.

Construction

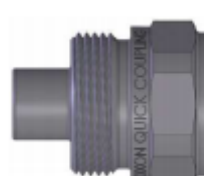
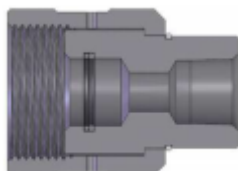
- ◆ Machined components are manufactured from 316 Stainless Steel bar stock
- ◆ Retaining ring is stainless steel to maximise corrosion resistance
- ◆ Standard seals are Nitrile (Buna-N)
- ◆ Anti extrusion ring provides resistance to O ring dynamic impulse pressure damage.

Specifications

- ◆ Operating temperature with standard NBR seals –20°C (-20°F) to 120°C (248°F)

Features

- ◆ Unvalved—high flow
- ◆ Thread to connect
- ◆ Corrosion resistant



Size	Part #	Thread	Material	Length mm	Max OD mm	Hex mm
1/2	CRSF-08NSS	1/2 NPT	316 Stainless	65.3	47.0	1.13
1/2	CRSM-08NSS	1/2 NPT	316 Stainless	52.3	44.5	1.63