

FF Series Couplers



Introduction

The FF series flat face couplers are the ideal choice where spillage constitutes a safety and environmental hazard. A tough, durable product of superior quality with a flat face on both halves that can be wiped clean to reduce the ingress of dirt and contaminants

Construction

- ◆ Carbon steel with trivalent plating
- ◆ Standard seals are Nitrile

Features

- ◆ New valve design resist damage from high flow and pressure impulses,
- ◆ Sleeve locking mechanism is standard
- ◆ Socket and plug machined from solid bar stock
- ◆ Critical parts hardened for durability
- ◆ The Anti-Blowout Nitrile/PTFE bonded seal prevent damage during severe service conditions
- ◆ New plating treatment provides advanced anti-rust performance

Specification

- ◆ Operating temperature with standard NBR seals -20°C (-20°F) to 120°C (248°F)

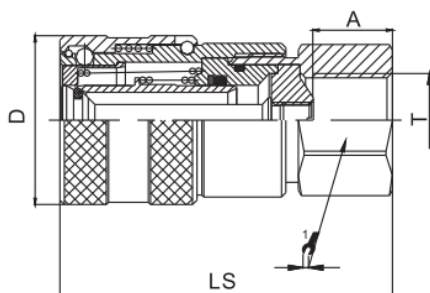
Applications

- ◆ Agriculture
- ◆ Mobile equipment
- ◆ Construction equipment
- ◆ Hydraulic Tools

Accessories

- ◆ Dust caps male & female are available

Size	1/4	3/8	1/2	5/8	3/4	1"
MWP PSI	6000	5000	5000	5000	5000	5000
Flow LPM	11.5	22.7	45.4	75.5	106	189



Part #	LS	D		A	T
FFF-04G	58.2	28	20	14	G1/4
FFF-06G	68.2	32	24	14	G3/8
FFF-0608G	72.2	32	27	18	G1/2
FFF-08G	75	38	32	18	G1/2
FFF-0812G	79	38	36	22	G3/4
FFF-1012G	99.8	42	36	22	G3/4
FFF-12G	99.8	48	41	22	G3/4
FFF-1216G	99.8	48	41	23.5	G1"
FFF-16G	111.5	56	55	24	G1"
FFF-1620G	111.5	56	55	24	G1 1/4

Part #	LS	D		A	T
FFF-0612U	68.2	32	24	14	UNO 3/4
FFF-0812U	75	38	32	18	UNO 3/4
FFF-0814U	75	38	32	18	UNO 7/8
FFF-0817U	79	38	36	22	UNO 1 1/16

FF Series Couplers



Introduction

The FF series flat face couplers are the ideal choice where spillage constitutes a safety and environmental hazard. A tough, durable product of superior quality with a flat face on both halves that can be wiped clean to reduce the ingress of dirt and contaminants

Construction

- ◆ Carbon steel with trivalent plating
- ◆ Standard seals are Nitrile

Features

- ◆ New valve design resist damage from high flow and pressure impulses,
- ◆ Sleeve locking mechanism is standard
- ◆ Socket and plug machined from solid bar stock
- ◆ Critical parts hardened for durability
- ◆ The Anti-Blowout Nitrile/PTFE bonded seal prevent damage during severe service conditions
- ◆ New plating treatment provides advanced anti-rust performance

Specification

- ◆ Operating temperature with standard NBR seals -20°C (-20°F) to 120°C (248°F)

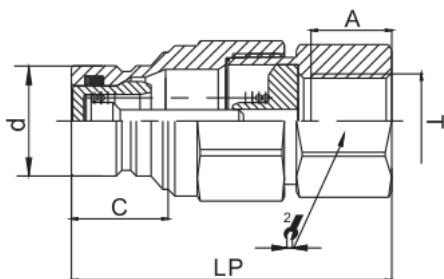
Applications

- ◆ Agriculture
- ◆ Mobile equipment
- ◆ Construction equipment
- ◆ Hydraulic Tools

Accessories

- ◆ Dust caps male & female are available

Size	1/4	3/8	1/2	5/8	3/4	1"
MWP PSI	6000	5000	5000	5000	5000	5000
Flow LPM	11.5	22.7	45.4	75.5	106	189



Part #	LP	d	C		A	T
FFM-04G	49.2	16.1	15.2	20	14	G1/4
FFM-06G	55.8	19.7	19.5	24	14	G3/8
FFM-0608G	59.8	19.7	19.5	27	18	G1/2
FFM-08G	72	24.5	21.6	32	18	G1/2
FFM-0812G	76	24.5	21.6	36	22	G3/4
FFM-1012G	75.5	27	21.6	36	22	G3/4
FFM-12G	93.8	30	29	41	22	G3/4
FFM-1216G	93.8	30	29	41	23.5	G1"
FFM-16G	90	36	34	55	24	G1"
FFM-1620G	90	36	34	65	24	G1 1/4

Part #	LP	d	C		A	T
FFM-0612U	55.8	19.7	19.5	24	14	UNO 3/4
FFM-0812U	72	24.5	21.6	32	18	UNO 3/4
FFM-0814U	72	24.5	21.6	32	18	UNO 7/8
FFM-0817U	76	24.5	21.6	36	22	UNO 1 1/16