

CRS Series 15K Pressure Couplings



Introduction

The CRS series coupler is a high pressure water blaster coupler. It's thread to connect so much safer than the common latch type.

Construction

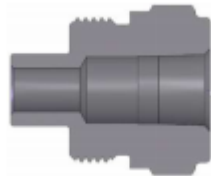
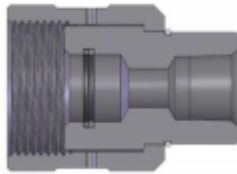
- ◆ Machined components are manufactured from 316 Stainless Steel bar stock
- ◆ Retaining ring is stainless steel to maximise corrosion resistance
- ◆ Standard seals are Nitrile (Buna-N)
- ◆ Anti extrusion ring provides resistance to O ring dynamic impulse pressure damage.

Specifications

- ◆ Operating temperature with standard NBR seals -20°C (-20°F) to 120°C (248°F)

Features

- ◆ Unvalved—high flow
- ◆ Thread to connect
- ◆ Corrosion resistant



Size	Part #	Thread	Material	Length mm	Max OD mm	Hex mm
1/2	CRSF-08NSS	1/2 NPT	316 Stainless	65.3	47.0	1.13
1/2	CRSM-08NSS	1/2 NPT	316 Stainless	52.3	44.5	1.63

PD Series Diagnostic Couplers



Introduction

PD couplers provide easy connection to mechanical gauges or specialised diagnostic equipment. PD nipples are usually permanently threaded in the test ports on the machine with the coupler attached to the test instrument.

Construction

- ◆ Carbon steel with trivalent plating
- ◆ Standard seals Nitrile

Features

- ◆ Flush face poppet valves minimise air inclusion and spillage
- ◆ Easy to clean surface prevents contamination
- ◆ Critical parts are hardened for durability
- ◆ Socket and plugs are machines from solid bar stock

Specification

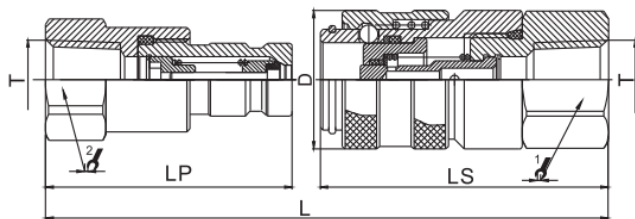
- ◆ Operating temperature with standard NBR seals -20°C (-20°F) to 120°C (248°F)

Size	1/4
MWP (PSI)	6000
Flow (LPM)	2.0

Applications

- ◆ Agriculture
- ◆ Mobile equipment
- ◆ Construction equipment

Any application where test equipment is used



Part #	T	D			L	LS	LP
PDF-02N	NPT 1/8	24	21	19	78.5	50	42.8
PDM-02N							
PDF-04N	NPT 1/4	24	21	19	78.5	50	42.8
PDM-04N							



TF Series Ultra High Pressure Coupler



Introduction

The TF series Ultra High Pressure couplers are the ideal choice where a tough, durable product of superior quality is required. They are perfectly suited to applications needing 20,000 psi working pressure.

Construction

- ◆ High resistance steel with trivalent plating
- ◆ Standard seals are Nitrile

Features

- ◆ Special valve design eliminates spillage when connecting and disconnecting
- ◆ Locking ball system allows for quick connect and disconnect
- ◆ Socket and plug machined from solid bar stock
- ◆ Special materials are used for critical parts and hardened for durability
- ◆ Compatible with Cejn 115 and 116 series

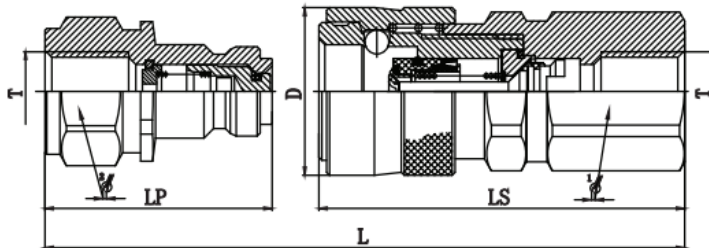
Specification

- ◆ Operating temperature with standard NBR seals -20°C (-20°F) to 120°C (248°F)

Applications

- ◆ Hydraulic jacking systems
- ◆ Torque tools
- ◆ Rescue equipment

Size	3/32
MWP (PSI)	21,740
Flow (LMN)	3.78



Part #	T	D			L	LS	LP
TFF-04G	G1/4	28	24	22	81	61.2	38
TFM-04G							

